



BIG HERC TRANSAXLE REPLACEMENT

INSTRUCTION MANUAL






Big Herc 24V 1400W Transaxle Conversion Kit Part No: 70385

KIT INCLUDES			
QTY	PART NO	DESCRIPTION	NOTES
1	PI-08-0185	24V 1400W Transaxle	
2	MI-08-2566	Transaxle Mount	
2	MI-12-7075	Hub for 24V 1400W Transaxle	
1	PI-11-0256	S-Drive 140	
6	PI-01-0177	5/16"-18 X 1" BOLT	Use a 1/2" Socket / Wrench
12	PI-01-0206	5/16" WASHER	
6	PI-01-0017	5/16"-18 LOCK NUT	Use a 1/2" Socket / Wrench
4	PI-01-0025	3/8"-16 X 1-1/4" BOLT	Use a 9/16" Socket / Wrench
8	PI-01-0030	3/8" WASHER	
4	PI-01-0019	3/8"-16 LOCK NUT	Use a 9/16" Socket / Wrench

NOTICE: Upgrading your Big Herc to the new transaxle changes the overall width of the cart from 32.5" to 36.5" wide.



GRANITE
INDUSTRIES

All Overland Carts are manufactured by:

Granite Industries
595 East Lugbill Rd.
Archbold, Ohio 43502

877-447-2648
OverlandCarts.com | GranitInd.com

BIG HERC TRANSAXLE REPLACEMENT

TOOLS

11/32" socket & wrench
1/2" socket & wrench
9/16" socket & wrench
3/4" socket & wrench
10 mm socket & wrench
16 mm or 17 mm socket & wrench
Phillips Screwdriver
6" pass through extension or 8" 16mm deep socket



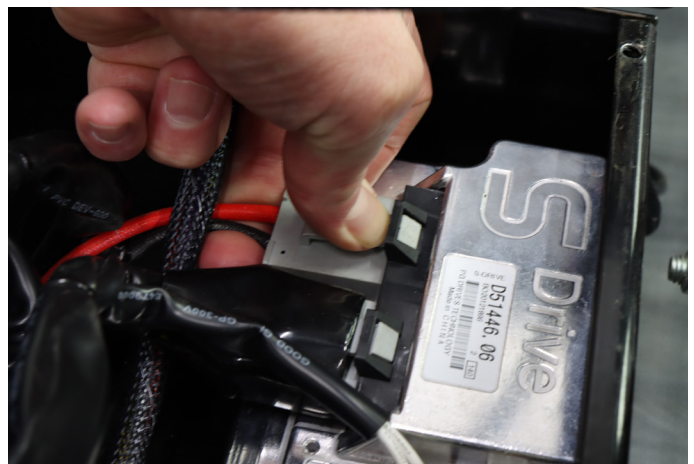
STEP 1 Lay the cart face down so the transaxle is exposed and easily accessible. You may wish to lay down cardboard or other protective layer.



STEP 2 Remove the dual ag tires with a 3/4" socket.

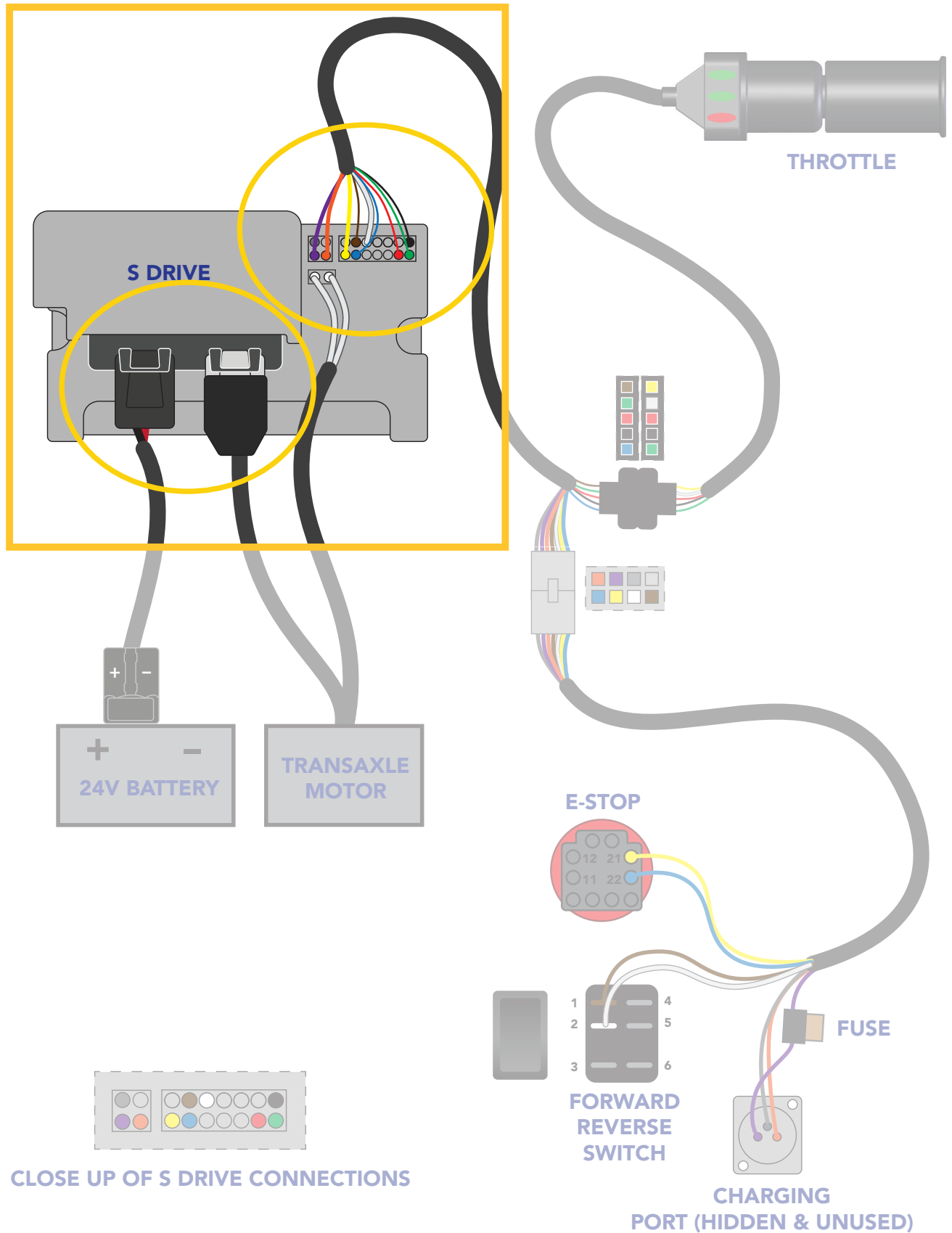


STEP 3 Using a 10mm socket, remove the 4 screws from the lid of the S-Drive box located just above the transaxle. Remove the lid and set aside.

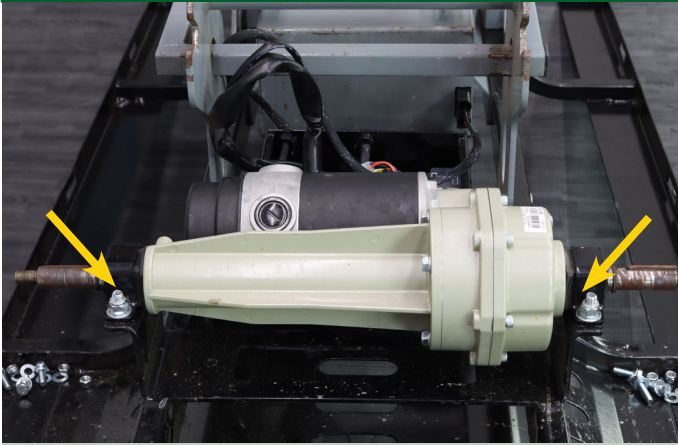


STEP 4 Once the lid is removed, disconnect all the cables from the S-Drive. You may need to use a screwdriver to press the tabs down to release the connectors.

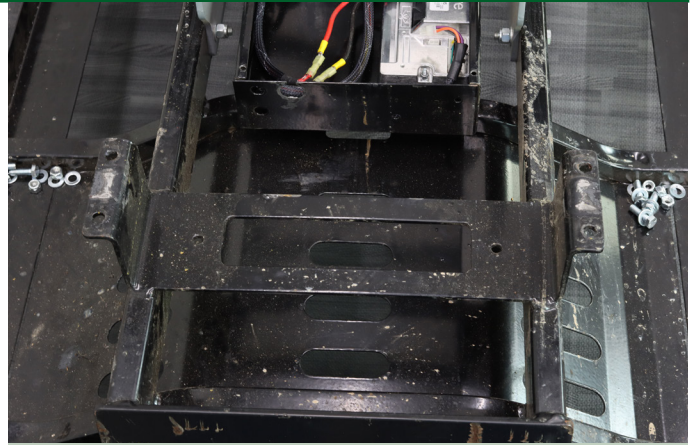
WIRING DIAGRAM FOR S-DRIVE & COMPONENTS



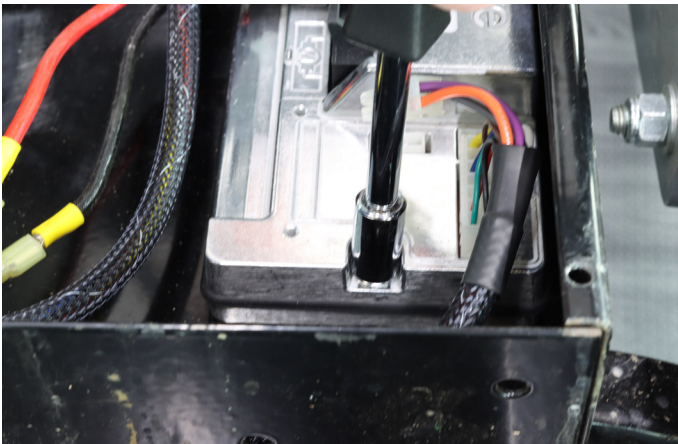
BIG HERC TRANSAXLE REPLACEMENT



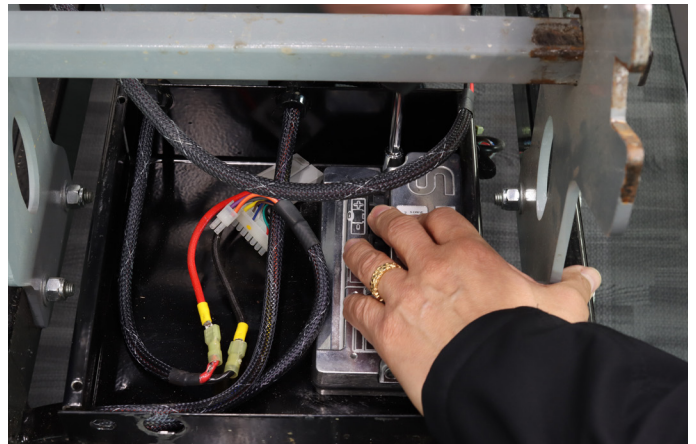
STEP 5 Using a 9/16" socket and wrench, remove the four bolts on the brackets holding the transaxle in place.



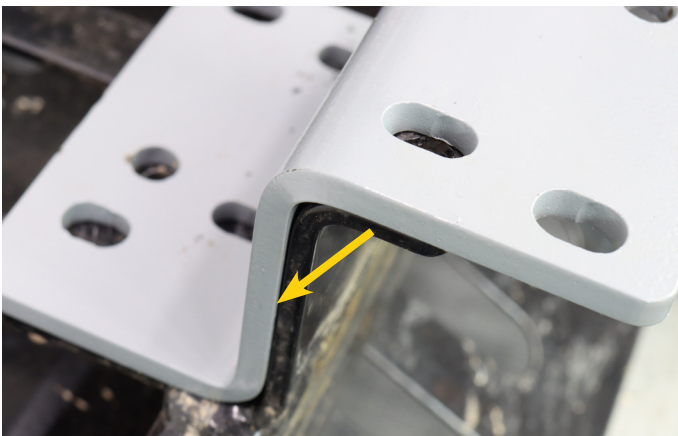
STEP 6 Remove the old Transaxle and set aside.



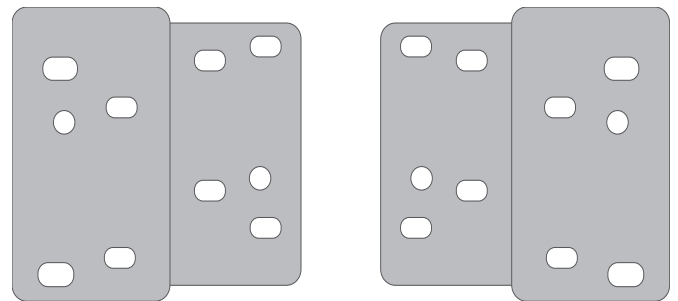
STEP 7 Using a 11/32" socket and a phillips screwdriver on the back side, remove the two bolts holding the S-Drive in place.



STEP 8 Take the old S-drive out of the box and replace it with the new one. Use the 11/32" socket and phillips screwdriver to secure it in place using the two bolts you removed from the old S-drive.

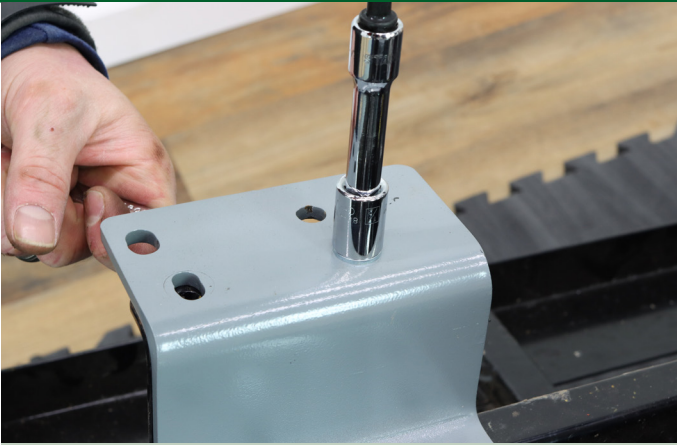


STEP 9 Align the two gray brackets onto the mounts where the old transaxle was. Make sure they are positioned like the diagram to the right. They should align flush with the bottom of the old mounts.

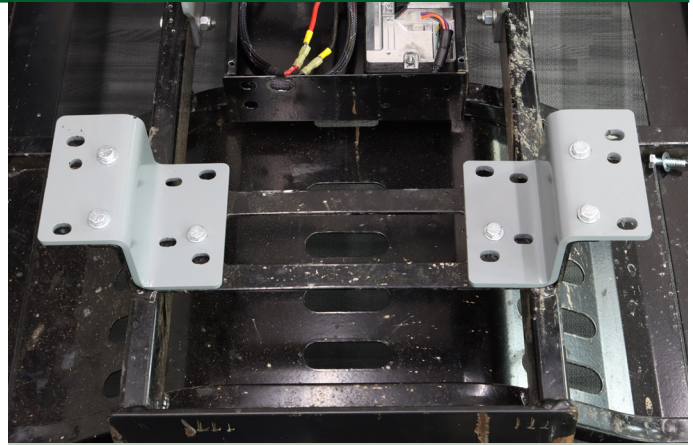


**New Transaxle Mounts
Positioning Diagram**

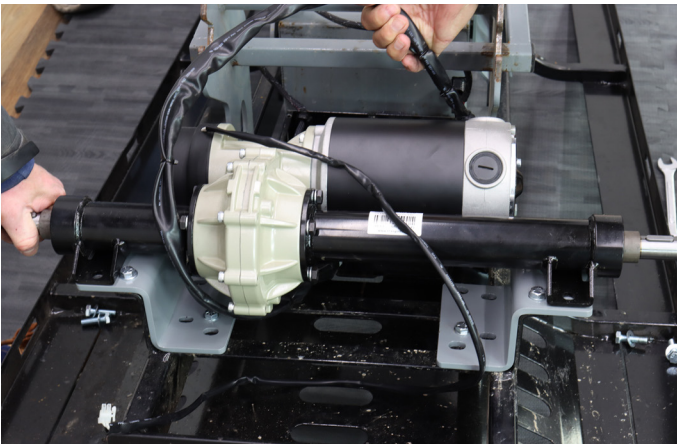
BIG HERC TRANSAXLE REPLACEMENT



STEP 10 Using a 1/2" socket and wrench, bolt on the gray brackets to the Big Herc cart frame.



The brackets should look as pictured when installed correctly.



STEP 11 Set the new transaxle onto the new mounting brackets as shown above.



STEP 12 Using a 9/16" socket and wrench, install the 4 bolts, securing the new transaxle in place.



STEP 13 Reconnect all of the wiring to the S-Drive. Refer to the diagram on page 4 to see where everything connects.



STEP 14 Once all the wires are reconnected, replace the lid on the s-drive box and secure with a 10mm socket and the 4 screws you removed earlier.

BIG HERC TRANSAXLE REPLACEMENT



STEP 15 Using a 16 or 17mm socket & wrench, remove bolts holding the old hubs from the dual ag tires.

RECOMMENDED MAINTENANCE - SEE PAGE 8



STEP 16 Take the new hub and place it onto the Dual ag tire. Note that one side of the hub is larger than the other. The hubs should be installed with the smaller edge facing outward.



STEP 17 Using a 16 or 17mm socket and wrench install the washers and nuts onto the new hub and tighten them down in place. Repeat steps 15-17 for the other dual ag tire.



STEP 18 Place the dual ag tires onto the cart. Note there is an arrow printed on the side of the tires. This arrow should be moving forward when the cart drives forward.



STEP 19 Using a 3/4" socket, attach the dual ag tires to the cart.



STEP 20 Your transaxle swap is complete. Stand the cart upright, power it on and make sure everything is operating correctly.

BIG HERC TRANSAXLE REPLACEMENT

OPTIONAL MAINTENANCE:

Occasionally with use and time the dual ag tires may loosen. The rims on these tires are two separate pieces and are held together with nuts and bolts. You may wish to tighten the nuts down on the bolts holding your dual ag tires together at this time.

The next few steps will walk you through this maintenance.



MAINT STEP 1 Using a 16 or 17mm socket and wrench, remove bolts holding the old hubs from the dual ag tires.



MAINT STEP 2 Remove one of the dual ag tires and set it aside. Remove the steel spacer around the bolts.



MAINT STEP 3 Using 16mm socket and wrench along with a 6" pass through socket extension or 8" deep socket, tighten the nuts down on all four bolts.



MAINT STEP 4 Once all four nuts are tightened down, you can reinstall the spacer and inside rim.



MAINT STEP 5 Slide the other dual ag tire onto the bolts. Make sure the arrows printed on the tires are rotating in the same direction, and check to make sure the tire tread direction also matches. Tighten the nuts in place using a 16 or 17mm socket and wrench.